

# TRAFFIC MANAGEMENT PLAN DURING PIPELINE INSTALLATION FROM AMPANG RESERVOIR TO AU3 RESERVOIR (CH1650-CH2200)(STAGE 2)

EMPLOYER:  
  
**Pengurusan Aset Air Berhad**  
 Tingkat 24, Menara Multi Purpose, Capital Square,  
 8, Jalan Munshi Abdullah,  
 50100 Kuala Lumpur  
 Tel: 603 26145555 Fax: 603 26145588

EMPLOYER'S STAMP & SIGNATURE

CONSULTANT:  
  
**SMHB Sdn. Bhd.**  
 In association with  
 R\PROJECTS\T0801\ANHILL.tif  
 CONSULTING ENGINEERS (SIA) (201002-A)  
  
**KTA Tenaga Sdn Bhd.**  
 CONSULTING ENGINEERS JURUTERA PERUNDING  
 (Company No. 213189-V)  
 PROJECT DESIGN OFFICE  
 Langat 2 WTP and Water Reticulation - Phase 1  
 No. 38, Jalan 1/76D, Desa Pandan,  
 55100 Kuala Lumpur, MALAYSIA  
 Tel : +603-9281 1122  
 Fax : +603-9283 9618  
 Email : LRAL2@langat2.com  
 Website : www.langat2.com

PROJECT:  
**PROPOSED DEVELOPMENT OF LANGAT 2 WATER TREATMENT PLANT AND WATER RETICULATION SYSTEM IN SELANGOR DARUL EHSAN / WILAYAH PERSEKUTUAN KUALA LUMPUR**

APPROVED BY AUTHORITY/UTILITY/SERVICE PROVIDER

THIS DRAWING IS PREPARED BY:

CONSULTANT'S CHOP & SIGNATURE

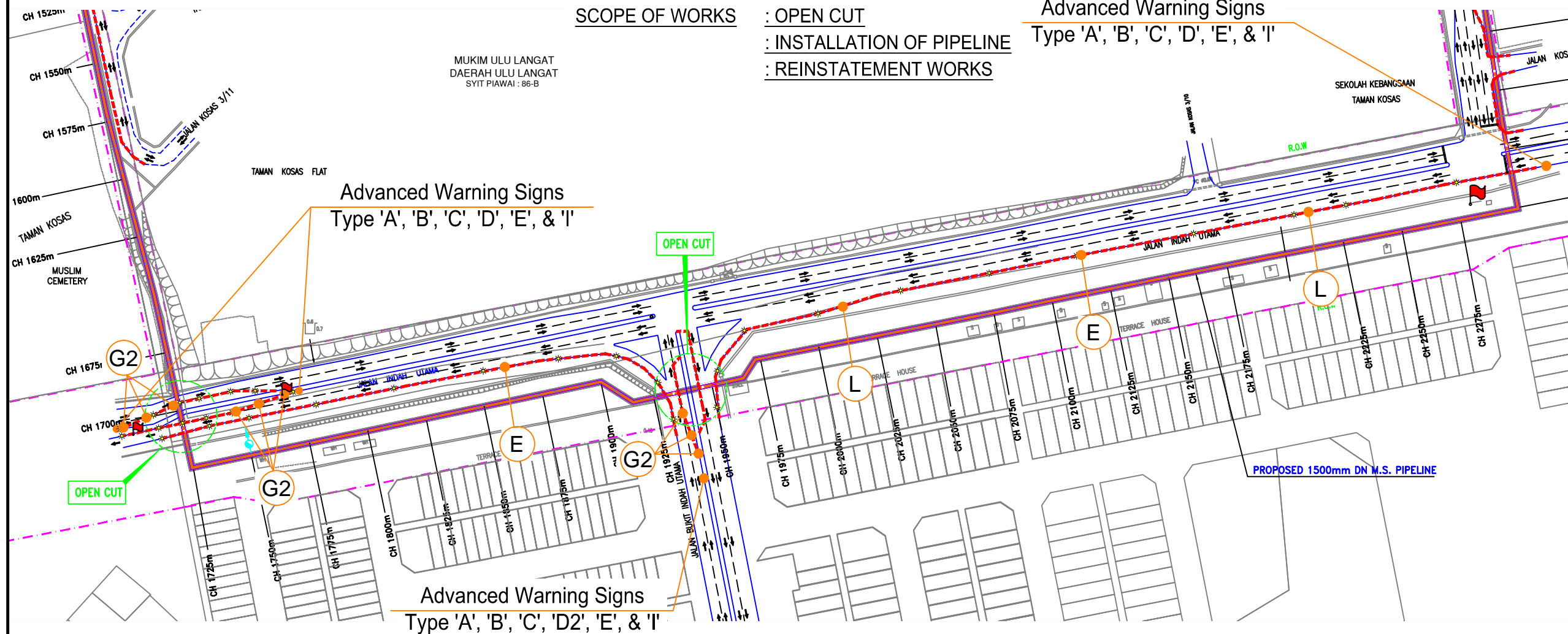
REVISION			
REV.	DATE	DESCRIPTION	APR

CONTRACT PACKAGE:  
 PAKEJ 6 : Membekal Dan Memasang Paip Air Terawat Utama Dari Kolam Air Ampang Ke Kolam Air AU3

DRAWING TITLE:  
**TRAFFIC MANAGEMENT PLAN DURING PIPELINE INSTALLATION FROM AMPANG RESERVOIR TO AU3 RESERVOIR (CH1650-CH2200)(STAGE 2)**

DATE: APRIL 2016	SCALE: AS SHOWN
DRAWN: -	CHECKED: -
DESIGNED: -	APPROVED: -
DRAWING NO: TMP/SUB/PIPELINE/PACKAGE6/006	REVISION: 00

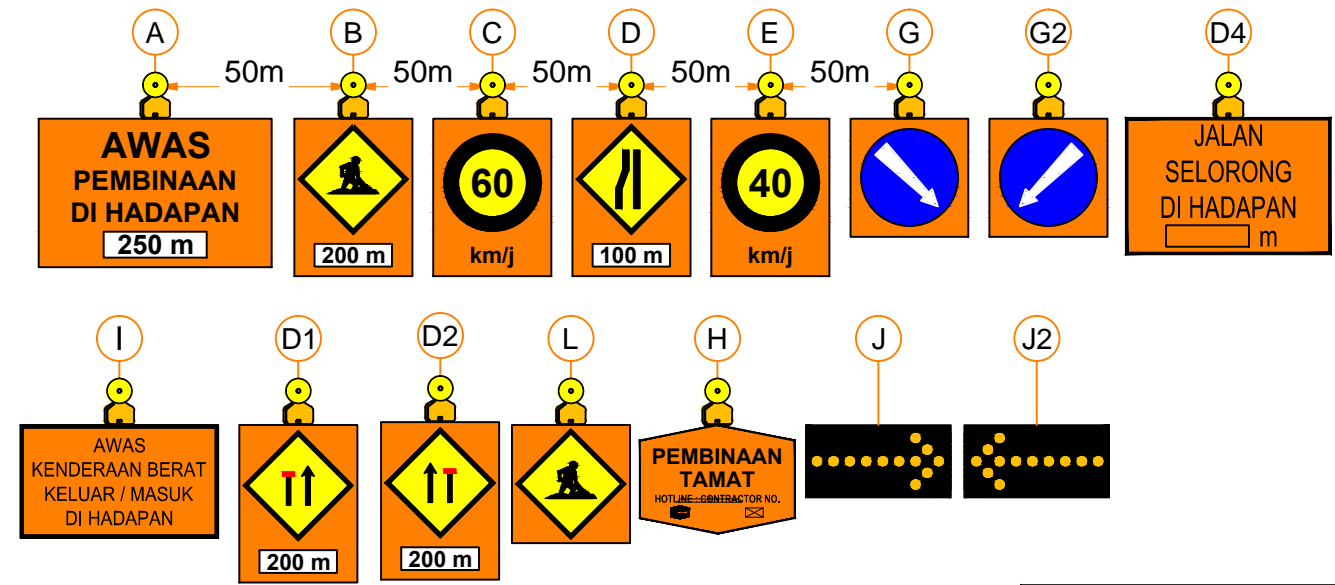
SCOPE OF WORKS : OPEN CUT  
 : INSTALLATION OF PIPELINE  
 : REINSTATEMENT WORKS  
 Advanced Warning Signs Type 'A', 'B', 'C', 'D', 'E', & 'I'



REMARKS :  
 1. BLINKERS : Straight stretch - 30 m interval  
 Taper - 10 m interval

LEGEND	
	EXISTING ROAD
	CHANNELIZING DEVICES
	PIPELINE
	MONSOON DRAIN / RIVER
	FLAGMAN
	INGRESS/EGRESS
	WORK AREA
	BLINKERS
	TRAFFIC FLOW

## ADVANCE WARNING SIGNS



**FOR INFORMATION ONLY**

(C) Copyright KTA Tenaga Sdn. Bhd.  
 All right reserved no part of this drawing may be used, reproduced or distributed in any form or by any means without the prior permission of KTA Tenaga Sdn Bhd and PAAB