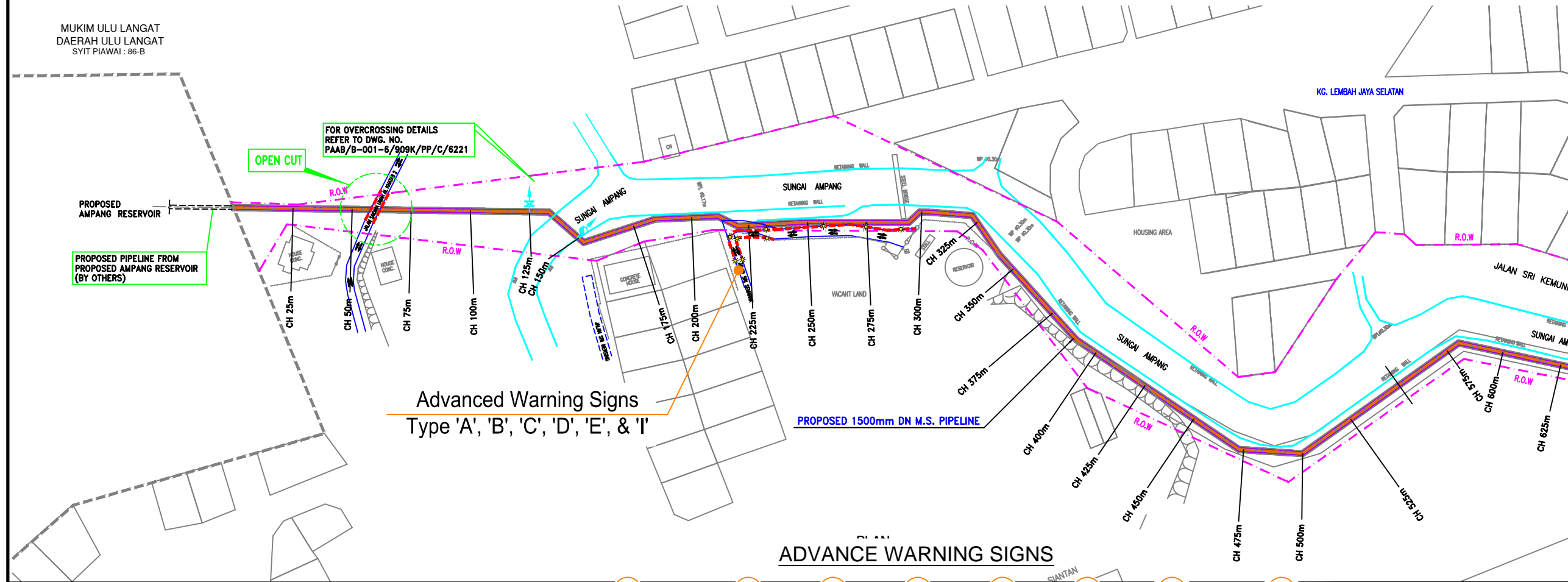


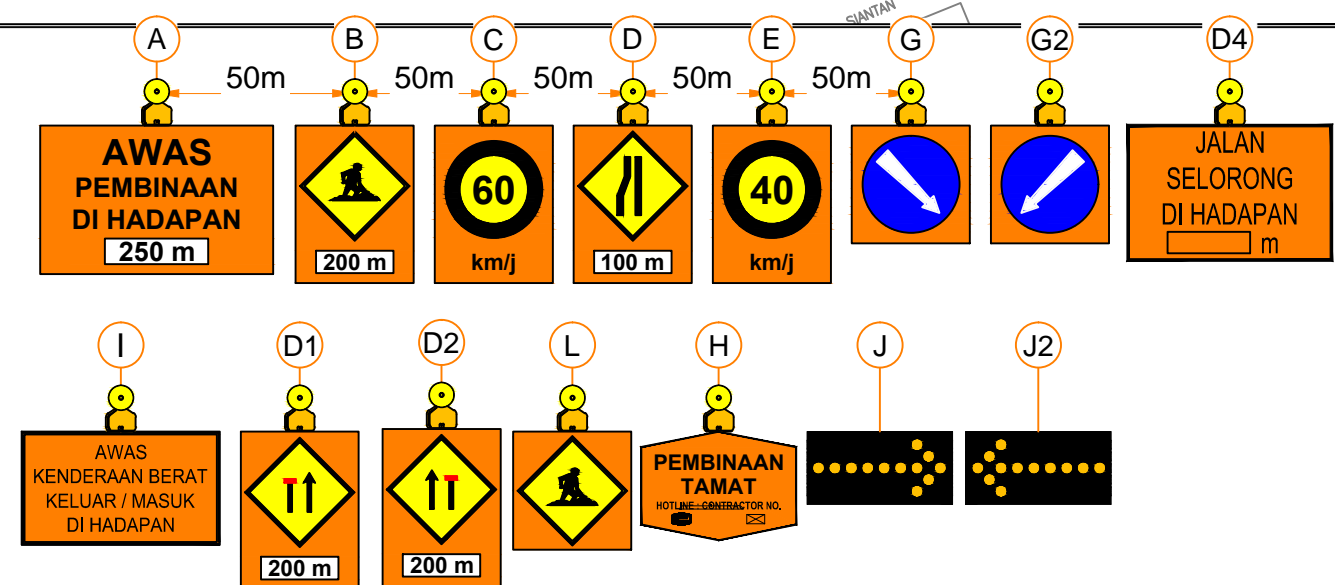
TRAFFIC MANAGEMENT PLAN DURING PIPELINE INSTALLATION FROM AMPANG RESERVOIR TO AU3 RESERVOIR (CH000-CH550)

SCOPE OF WORKS : OPEN CUT
 : INSTALLATION OF PIPELINE
 : REINSTATEMENT WORKS



Advanced Warning Signs Type 'A', 'B', 'C', 'D', 'E', & 'I'

ADVANCE WARNING SIGNS



REMARKS :
 1. BLINKERS : Straight stretch - 30 m interval
 Taper - 10 m interval

LEGEND	
	EXISTING ROAD
	TRAFFIC FLOW
	CHANNELIZING DEVICES
	PIPELINE
	MONSOON DRAIN / RIVER
	FLAGMAN
	INGRESS/EGRESS
	WORK AREA
	BLINKERS

(C) Copyright KTA Tenaga Sdn. Bhd.
 All right reserved no part of this drawing may be used, reproduced or distributed in any form or by any means without the prior permission of KTA Tenaga Sdn Bhd and PAAB

FOR INFORMATION ONLY

EMPLOYER:
Pengurusan Aset Air Berhad
 Tingkat 24, Menara Multi Purpose, Capital Square,
 8, Jalan Munshi Abdullah,
 50100 Kuala Lumpur
 Tel: 603 26145555 Fax: 603 26145588

EMPLOYER'S STAMP & SIGNATURE

CONSULTANT:

SMHB Sdn. Bhd.
 Jurutera Perancang - Consulting Engineers
 In association with
 R:\PROJECTS\T0801\LANHILL.tif

KTA Tenaga Sdn Bhd.
 CONSULTING ENGINEERS JURUTERA PERANCANG
 (Company No. 2130109-V)

PROJECT DESIGN OFFICE
 Langat 2 WTP and Water Reticulation - Phase I
 No. 38, Jalan 1/76D, Desa Pandan,
 55100 Kuala Lumpur, MALAYSIA
 Tel : +603-92811122
 Fax : +603-9283 9618
 Email : LRAL2@langat2.com
 Website : www.langat2.com

PROJECT:
 PROPOSED DEVELOPMENT OF LANGAT 2
 WATER TREATMENT PLANT AND WATER
 RETICULATION SYSTEM IN SELANGOR
 DARUL EHSAN / WILAYAH PERSEKUTUAN
 KUALA LUMPUR

APPROVED BY AUTHORITY/UTILITY/SERVICE PROVIDER

THIS DRAWING IS PREPARED BY:

CONSULTANT'S CHOP & SIGNATURE

REVISION			
REV.	DATE	DESCRIPTION	APR

CONTRACT PACKAGE:
 PAKEJ 6 : Membekal Dan Memasang Paip Air Terawat
 Utama Dari Kolam Air Ampang Ke Kolam Air
 AU3

DRAWING TITLE:
 TRAFFIC MANAGEMENT PLAN DURING
 PIPELINE INSTALLATION FROM AMPANG
 RESERVOIR TO AU3 RESERVOIR
 (CH000-CH550)

DATE: APRIL 2016	SCALE: AS SHOWN
DRAWN: -	CHECKED: -
DESIGNED: -	APPROVED: -
DRAWING NO: TMP/SUB/PIPELINE/PACKAGE6/001	REVISION 00